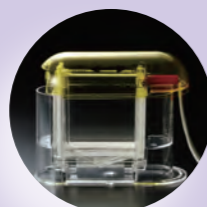


Precast Gels MULTIGEL® II Mini

Mini Gel



Cassette Electrophoresis Unit (Model DPE-1020)

**PACAGE**  
5 SHEETS

Mini Gel specification

Gel size (mm)	85 (W) × 90 (L) × 0.9 (t)
Plate outer size (mm)	100 (W) × 100 (L) × 3.1 (t)

**-Application-**

MUTIGEL II Mini is designed for polyacrylamide gel electrophoresis with the discontinuous buffer system.

- Protein / SDS-polyacrylamide gel electrophoresis (SDS-PAGE) with Laemmli's discontinuous buffer system.
- Protein / native-PAGE with Davis's discontinuous buffer system.
- Deoxyribo nucleic acid / PAGE with discontinuous buffer system.
- best suited for Quality Control (QC)

**-Feature and Advantages-**

- Always FRESH and Ready-to-Use Form
- High resolution in short time
- Excellent reproducibility
- Very sharp banding with new comb design
- Can be used for all of native-PAGE, SDS-PAGE, and DNA analysis.

# Assay Development and Detection Toolbox

Optimize your antibody based assay system with these unique, powerful reagents and accessories.



- ▶ IMMUNO SHOT An immuno-reaction enhancing solution
- ▶ Multi-Purpose Incubation Chamber
- ▶ Synthetic Polymer Blocking Reagents
- ▶ Peroxidase Enzyme Stabilizer
- ▶ ALP (Alkaline Phosphatase) Enzyme Stabilizer
- ▶ PAP Pen Super-Liquid Blocker Mini
- ▶ 2D-Silver Stain II (for PAGE gels)
- ▶ Precast Gels MULTIGEL® II Mini

Gradient Gels

Description	Catalog No.	Number of wells	Acrylamide concentration	MW (Da) SDS-PAGE	MW (bp) DNA
Multi Gel® II mini 2/15 (13W)	DCB-414855	13	2 - 15%	30 - 500K	200 - 2,000
Multi Gel® II mini 2/15 (17W)	DCB-414862	17			
Multi Gel® II mini 4/20 (13W)	DCB-414879	13	4 - 20%	15 - 250K	40 - 1,800
Multi Gel® II mini 4/20 (17W)	DCB-414886	17			
Multi Gel® II mini 5/10 (13W)	DCB-441776	13	5 - 10%	35 - 450K	-
Multi Gel® II mini 5/10 (17W)	DCB-443114	17			
Multi Gel® II mini 8/16 (13W)	DCB-417269	13	8 - 16%	20 - 200K	70 - 1,500
Multi Gel® II mini 8/16 (17W)	DCB-417276	17			
Multi Gel® II mini 10/20 (13W)	DCB-414893	13	10 - 20%	12 - 130K	30 - 1,500
Multi Gel® II mini 10/20 (17W)	DCB-414909	17			
Multi Gel® II mini 2D-10/20	DCB-415074	1	10 - 20%	12 - 130K	-
Multi Gel® II mini 15/20 (13W)	DCB-432026	13	15 - 20%	3 - 85K	-
Multi Gel® II mini 15/20 (17W)	DCB-443121	17			
Multi Gel® II mini 15/25 (13W)	DCB-414916	13	15 - 25%	3 - 85K	20 - 1,000
Multi Gel® II mini 15/25 (17W)	DCB-414923	17			

Fixed Percentage Gels

Description	Catalog No.	Number of wells	Acrylamide concentration	MW (Da) SDS-PAGE	MW (bp) DNA
Multi Gel® II mini 5 (13W)	DCB-443138	13	5%	100 - 500K	-
Multi Gel® II mini 5 (17W)	DCB-443145	17			
Multi Gel® II mini 7.5 (13W)	DCB-414930	13	7.5%	45 - 250K	250 - 2,000
Multi Gel® II mini 7.5 (17W)	DCB-414947	17			
Multi Gel® II mini 10 (13W)	DCB-414954	13	10%	30 - 200K	140 - 1,700
Multi Gel® II mini 10 (17W)	DCB-414961	17			
Multi Gel® II mini 12.5 (13W)	DCB-414978	13	12.5%	20 - 150K	60 - 1,500
Multi Gel® II mini 12.5 (17W)	DCB-414985	17			
Multi Gel® II mini 15 (13W)	DCB-443152	13	15%	10 - 150K	-
Multi Gel® II mini 15 (17W)	DCB-443169	17			

Narrow Range Gradient Gels Gradient Gels

Description	Catalog No.	Number of wells	Acrylamide concentration	MW (Da) SDS-PAGE	MW (bp) DNA
Multi Gel® II mini 6 / 9 (13W)	DCB-414992	13	6 - 9%	45 - 250K	250 - 2,000
Multi Gel® II mini 6 / 9 (17W)	DCB-415005	17			
Multi Gel® II mini 9 / 11 (13W)	DCB-415012	13	9 - 11%	30 - 200K	140 - 1,700
Multi Gel® II mini 9 / 11 (17W)	DCB-415029	17			
Multi Gel® II mini 11/14 (13W)	DCB-415036	13	11 - 14%	20 - 150K	60 - 1,500
Multi Gel® II mini 11/14 (17W)	DCB-415043	17			
Multi Gel® II mini 14/16 (13W)	DCB-415050	13	14 - 16%	15 - 100K	40 - 1,200
Multi Gel® II mini 14/16 (17W)	DCB-415067	17			



**COSMO BIO Co., LTD.**  
Inspiration for Life Science

TOYO 2CHOME, KOTO-KU, TOKYO, 135-0016, JAPAN  
[http://www.cosmobio.co.jp/index\\_e.asp](http://www.cosmobio.co.jp/index_e.asp) e-mail: [export@cosmobio.co.jp](mailto:export@cosmobio.co.jp)  
 Phone : +81-3-5632-9617 FAX : +81-3-5632-9618



**COSMO BIO Co., LTD.**  
Inspiration for Life Science

## IMMUNO SHOT An immuno-reaction enhancing solution

### -Background-

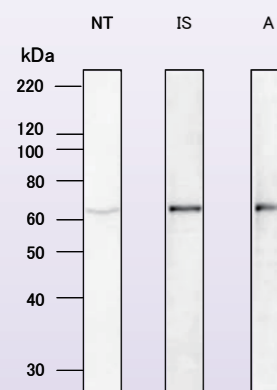
IMMUNO SHOT is an enhancer of antigen-antibody reaction. In Western blotting and ELISA, researchers often experiences weak signal or high background. IMMUNO SHOT improves these problems by just using it as antibody diluents. Due to the principle of working mechanism, IMMUNO SHOT can be used in many assay systems that use antigen-antibody reaction.

### -How IMMUNO SHOT Works-

IMMUNO SHOT contains a polymer which, by changing the physicochemical properties of antigen and antibody, enhances the mutual accessibility, and facilitate the specific reaction. The other ingredient, protein, reduces non-specific binding of antibody. Thus, IMMUNO SHOT enhances the antigen-antibody reaction while reduces background.

### -Features-

- High signal with low background
- Effective for saving antibody usage and time of reaction
- Can be used for many reactions
- Easy to use



NT: TBS-T  
IS: IMMUNO SHOT  
A: Company A product

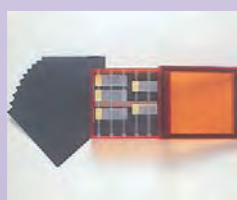
Fig. IMMUNO SHOT versus Company A product Western blot results. The HepG2 cell lysate expressing Luciferase gene was detected by Western blot using Goat anti Luciferase polyclonal antibody and Donkey anti Goat IgG HRP conjugated. The primary antibody and secondary antibody were diluted in IMMUNO SHOT reagent 1 and 2 or Company A product reagent 1 and 2. NT was diluted in TBS-T (0.1% Tween-20).



Description	Components	Cat#	Quantity
IMMUNO SHOT Reagent 1&2	Reagent 1: 100ml Reagent 2: 100ml	CSR-IS-012-100	1 KIT
IMMUNO SHOT Reagent 1&2	Reagent 1: 250ml Reagent 2: 250ml	CSR-IS-012-250	1 KIT
IMMUNO SHOT Reagent 1	Reagent 1: 100ml	CSR-IS-001-100	100 ML
IMMUNO SHOT Reagent 1	Reagent 1: 250ml	CSR-IS-001-250	250 ML
IMMUNO SHOT Reagent 2	Reagent 2: 100ml	CSR-IS-002-100	100 ML
IMMUNO SHOT Reagent 2	Reagent 2: 250ml	CSR-IS-002-250	250 ML

## Incubation Chamber

Useful for all kinds of immunostaining procedures, including the fluorescent antibody and enzyme-linked antibody techniques.



**Incubation Chamber Sheets** cat# KMB-ICS size: 50sheets (optional)  
Spreading out a sheet provides a black background that makes samples easy to view.  
The sheets are highly water absorbent.

Description	Accessory	Color	Cat#	Quantity
Incubation Chamber for 10 Slides 195 x 172 x 48 mm 7.7x 6.8 x 1.9 in 700 g	6x Glass bars	Cool Gray	KMB-10CG	1 BOX
		Dark Orange	KMB-10DO	1 BOX
Incubation Chamber for 20 Slides 345 x 195 x 48 mm 13.6x 7.7 x 1.9 in 1250 g	6x Glass bars	Cool Gray	KMB-20CG	1 BOX
		Dark Orange	KMB-20DO	1 BOX

## Blocking reagents

### -Synthetic polymer type blocking reagent--

#### -Features-

- Based on synthetic macromolecule (contains synthetic polymers)
- No contain a material of an animal source
- Excellent effect to non-specific binding

#### -Usage-

- Use it like usual blocking reagents
- Use from 1 to 25-fold dilution  
---recommend 5-fold dilution by saline---
- Recommend dry-treatment after blocking



Description	Cat#	Quantity	
Blocking reagents-NB20z	NOF-51005011	250 ML	Different in molecular structure of synthetic polymers
Blocking reagents-NB30z	NOF-51005012	250 ML	
Blocking reagents-NB40z	NOF-51005013	250 ML	Especially for human IgG in sera

## Peroxidase Stabilizer

### -Synthetic polymer type peroxidase stabilizer-

#### -Features-

- Peroxidase stabilizer for enzyme Immunoassay
- Do not contain any bio-derived materials
- Excellent stability for POD conjugate protein

#### -Usage-

- Use it like usual stabilizer
- Use from 1 to 25-fold dilution  
--- recommend stock solution ---
- Recommend dilute POD conjugate over 10 fold

## ALP Stabilizer

### -Synthetic polymer type alkaline phosphatase stabilizer-

#### -Features-

- Peroxidase stabilizer for enzyme Immunoassay
- Do not contain any bio-derived materials
- Excellent stability for POD conjugate protein

#### -Usage-

- Use it like usual stabilizer
- Use from 1 to 25-fold dilution  
--- recommend stock solution ---
- Recommend dilute POD conjugate over 10 fold



Description	Cat#	Quantity
Peroxidase stabilizer-ST2010	NOF-51005014	100 ML
ALP stabilizer-ST3010	NOF-51005015	100 ML
ALP stabilizer-ST4010	NOF-51005016	100 ML

## PAP Pen Super-Liquid Blocker Mini



### -Background-

Reducing waste and divides slides into discrete areas for immunostaining, histology, cytology, cell culture, virology, microbiology. Effective for immunostaining, PAP method, ABC method, ASD method, enzyme and frozen section methods.



### -Features-

Super PAP Pen Liquid Blocker, clear, mini size, approx. 7.5ml. PAP Pens are used for immunohistochemical applications. The hydrophobic properties allow the user to draw barriers on the slide, in any pattern, to confine the flow of reagents to a defined area. A minimum of valuable antiserum will be used. Marking can be removed with Xylene.

Description	Cat#	Quantity
PAP Pen Super-LiquidBlocker Mini	DAI-PAP-S-M	1 pack

## 2-D Silver Stain II



Even first time users can enjoy high sensitivity detection with easy to use 2-D Silver Stain II. Even staining, low background, high contrast bands.

- Rapid staining results in an hour after electrophoresis.
- Staining with higher sensitivity.  
-For proteins...50 to 100 times more sensitive than CBB staining  
-For nucleic acids...50 to 100 times more sensitive than EB staining
- Simple preparation and simple operation.
- Safe operation. No heavy metals except silver

Description	Cat#	Quantity
2-D Silver Stain II	DCB-423413	1 pack