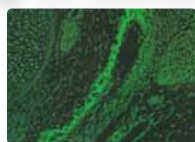


## Bone Marker Protein Antibody

### Anti Osteocalcin



Anti (MAP) Osteocalcin Polyclonal antibody [Cat# LSL-LB4005]  
FITC-Immunofluorescent staining of vivipary 16 days Rat mandibular (4% formalin).

Description	Cat No.	Size	Source	Host	Cross React	Application
Anti Osteocalcin	LSL-LB4005	100 µl	Mouse	Rabbit	HU/MS/RAT/BOV	WB/IHC(p)/IHC(f)

### Anti Osteonectin

Description	Cat No.	Size	Source	Host	Cross React	Application
Anti Osteonectin	LSL-LB-4115	100 µl	Mouse	Rabbit	HU/MS/RAT/BOV	WB/IHC(p)/IHC(f)

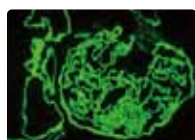
### Anti Osteonectin



Anti mouse MAP Osteopontin Polyclonal antibody [Cat# LSL-LB4225]  
Rhodamine-Immunofluorescent staining of vivipary 18 days Rat lower limb (4% formalin).

Description	Cat No.	Size	Source	Host	Cross React	Application
Anti Osteopontin	LSL-LB-4225	100 µl	Mouse	Rabbit	HU/MS/RAT/BOV	WB/IHC(p)/IHC(f)
Anti Bone Sialoprotein	LSL-LB-4335	100 µl	Mouse	Rabbit	HU/MS/RAT/BOV	WB/ELISA/IHC

## Anti Human Collagen IV $\alpha 5$ Chain monoclonal antibody



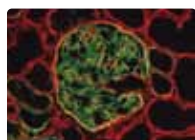
Human cryostat section stained with monoclonal antibody clone H52 [Cat.# SGE-C452]

Description	Cat No.	Size	Source	Host	Cross React	Application
Anti Collagen 4 Alpha5	SGE-C452	500 µl	Human	Rat	HU/RAT/BOV/RAB/CAN/GP	WB/IF

## Alport's Syndrome Monoclonal Staining Cocktail

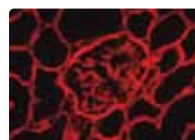
### FITC-Anti Human Collagen IV $\alpha 5$ (IV) chain, (mAb) & Texas Red-Anti Human Collagen IV $\alpha 2$ (IV) Chain, (mAb)

This product is a cocktail of FITC-conjugated anti- $\alpha 5$ (IV) and Texas Red-conjugated anti- $\alpha 2$ (IV) and is ideal for studying Alport's syndrome, a familial disease characterized by a reduction or absence of collagen  $\alpha 5$ (IV) chain in the glomerular, tubular, and Bowman's capsular basement membranes of the kidney.



Double exposure of normal human kidney section stained with the product.

FITC fluorescence ( $\alpha 5$  chain) is observed in the glomerular, tubular and Bowman's capsular basement membranes of the kidney.



Double exposure of Alport human kidney section stained with the product.

Only Texas Red ( $\alpha 4$  chain) fluorescence is observed in the kidney of an X-linked Alport's syndrome patient, indicating the absence of  $\alpha 5$  chain in basement membranes.

Description	Cat No.	Size	Source	Host	Cross React	Application
Anti Collagen 4	SGE-CFT45325	1 ml	Human	Rat	HU	FITC/TXRD IF



**COSMO BIO Co., LTD.**

TOYO EKIMAE BLDG. 2-20, TOYO 2-CHOME,  
KOTO-KU, TOKYO 135-0016, JAPAN  
TEL : (81)3-5632-9617  
FAX : (81)3-5632-9618  
e-mail : export@cosmobio.co.jp  
URL : www.cosmobio.com

For research use only

# Antibodies & Kits Collagen Detection

## Human collagen type I ELISA kit

A widely used assay for fast, easy detection of collagen type 1 in extra-cellular matrix, tissue, or secreted from cultured cells. In this competitive format assay, collagen in samples inhibits the maximal binding of biotinylated polyclonal anti-collagen type 1 to immobilized collagen, then quantitated by OD at 450 nm in a color reaction with streptavidin-labeled peroxidase and TMB substrate.



### Features

- Fast to finish. Results in less than 2.5 hours
- Convenient 8-well strip plate format allows multiple runs
- Measures up to 40 samples per kit (duplicate wells)
- Safe, non-radioactive format requires only a standard microplate reader.

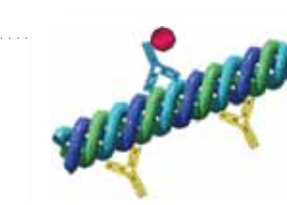
### Cross Reactivity

Bovine Collagen, Type I	0.0%
Human Collagen, Type II	5.6%
Human Collagen, Type III	10.0%
Porcine Collagen	20.0%

Description	Cat No.	Size	Assay Range
Human Collagen Type I ELISA (without pepsin)	ACE-EC1-E105-EX	1 kit	0.02-40 µg/ml
Human Collagen Type I ELISA (with pepsin)	ACE-EC1-E205-EX	1 kit	0.02-40 µg/ml
Pepsin for Human Collagen Type I ELISA	ACE-EC1-E110EX	500 mg	-

## Collagen type II ELISA kit

This *Rheumera*™ kit measures native (not denatured) type II collagen from cells, cultured tissue or cartilage homogenates from most species with nanogram sensitivity. In this assay, native collagen type 2 in samples is captured by immobilized collagen type II antibody, then quantitated by OD at 450 nm using a biotin-labeled specific antibody and a streptavidin-peroxidase/TMB detection system.



Reactivity most species

Description	Cat No.	Size
Capture Native Type II Collagen ELISA	ASB-5000-EX	1 kit

*Rheumera*™ ELISA Kits are also available for detection of collagen type II autoantibodies from human, mouse, or rat. Collagen type II autoantibodies in body fluids have been associated with diseases including rheumatoid arthritis, relapsing polychondritis, SLE, scleroderma, circulatory diseases, and otosclerosis.

Description	Cat No.	Size	Reactivity
Anti Type II Collagen ELISA	ASB-4000-EX	1 kit	HU
Anti Type II Collagen ELISA	ASB-3000-EX	1 kit	MS
Anti Type II Collagen ELISA	ASB-6000-EX	1 kit	RAT



**COSMO BIO Co., LTD.**

## Cell Matrix Protein Antibody

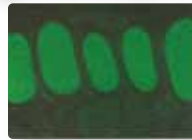
### Anti Collagen 1



Anti human and bovine, Collagen type I Polyclonal antibody [Cat# LSL-LB1190]  
 FITC-Immunofluorescent staining of Human gum (4% formalin).

Description	Cat No.	Size	Source	Host	Cross React	Application
Anti Collagen 1	LSL-LB1102	100 µl	Rat	Rabbit	HU/MS/RAT/BOV/POR/GP/Mink	ELISA/IHC(f, p)
Anti Collagen 1	LSL-LB1190	100 µl	Human/ Bovine	Rabbit	HU/BOV/POR/MKY/GP	ELISA/IHC(f, p)
Anti Collagen 1	LSL-LB1196	100 µl	Porcine	Rabbit	HU/BOV/POR/CAN	ELISA/IHC(f, p)
Anti Collagen 1	LSL-LB1197	100 µl	Bovine	Rabbit	HU/BOV/POR/SHP/GP	ELISA/IHC(f, p)

### Anti Collagen 2



Anti bovine, Collagen type II Polyclonal antibody [Cat# LSL-LB1297]  
 FITC-Immunofluorescent staining of Rat tracheal cartilages and perifocal tissue (4% formalin).

Description	Cat No.	Size	Source	Host	Cross React	Application
Anti Collagen 2	LSL-LB1297	100 µl	Bovine	Rabbit	HU/MS/RAT/BOV/GP	ELISA/IHC(f, p)

### Anti Collagen 3



Anti human bovine, Collagen type III Polyclonal antibody [Cat# LSL-LB1300]  
 FITC-Immunofluorescent staining of Human gum (4% formalin).

Description	Cat No.	Size	Source	Host	Cross React	Application
Anti Collagen 3	LSL-LB1300	100 µl	Human	Rabbit	HU/BOV/POR/Mink	ELISA/IHC(f, p)
Anti Collagen 3	LSL-LB1387	100 µl	Bovine	Rabbit	HU/MS/RAT/BOV/GP	ELISA/IHC(f, p)
Anti Collagen 3	LSL-LB1393	100 µl	Mouse	Rabbit	HU/MS/RAT/BOV/POR	ELISA/IHC(f, p)

### Anti Collagen 4

Description	Cat No.	Size	Source	Host	Cross React	Application
Anti Collagen 4	LSL-LB1403	100 µl	Mouse	Rabbit	HU/MS/RAT/GP/Mink	ELISA/IHC(f, p)
Anti Collagen 4	LSL-LB1407	100 µl	Bovine	Rabbit	HU/MS/RAT/BOV/POR/GT/GP/Mink	ELISA/IHC(f, p)
Anti Collagen 4	LSL-LB0445	100 µl	-	Rabbit	HU/MS/RAT/MKY/BOV	ELISA/IHC(f, p)
Anti Collagen 4	DFK-F-59	1 ml	Human	Mouse	HU	EIA/IHC(f, p)/WB

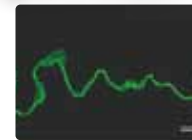
### Anti Collagen 5

Description	Cat No.	Size	Source	Host	Cross React	Application
Anti Collagen 5	LSL-LB1597	100 µl	Bovine	Rabbit	HU/BOV/POR/GT/GP	ELISA/IHC(f, p)
Anti Collagen 5	LSL-LB1503	100 µl	Mouse	Rabbit	HU/MS/RAT/BOV	ELISA/IHC(f, p)

### Anti Collagen 6

Description	Cat No.	Size	Source	Host	Cross React	Application
Anti Collagen 6	LSL-LB1697	100 µl	Bovine	Rabbit	HU/MS/RAT/BOV/GP	ELISA/IHC(f, p)

### Anti Collagen 7



Immunofluorescence (x20)  
 Anti Collagen 7 Monoclonal antibody [Cat# : CAC-NU-01-CO7]  
 Epidermal basal layer containing Collagen type 7 is stained green. ( Scale bar, 40 m )

Description	Cat No.	Size	Source	Host	Cross React	Application
Anti Collagen 7	LSL-LB0771	100 µl	Human	Rabbit	HU/MS/RAT/BOV	ELISA/IHC(f, p)
Anti Collagen 7	CAC-NU-01-CO7	500 µl	Bovine	Mouse	HU/BOV/RAB/POR	WB, IF, IP

### Anti Collagen 8

Description	Cat No.	Size	Source	Host	Cross React	Application
Anti Collagen 8	LSL-LB0883	100 µl	Mouse	Rabbit	HU/MS/RAT/BOV	ELISA/IHC(f, p)

### Anti Collagen 9

Description	Cat No.	Size	Source	Host	Cross React	Application
Anti Collagen 9	LSL-LB0903	100 µl	Mouse	Rabbit	HU/MS/RAT/BOV	ELISA/IHC(f, p)

### Anti Collagen 10

Description	Cat No.	Size	Source	Host	Cross React	Application
Anti Collagen 10	LSL-LB0092	100 µl	Rat	Rabbit	HU/MS/RAT/CHK	ELISA/IHC(f, p)

### Anti Collagen 11

Description	Cat No.	Size	Source	Host	Cross React	Application
Anti Collagen 11	LSL-LB0092	100 µl	Rat	Rabbit	HU/MS/RAT/CHK	ELISA/IHC(f, p)

### Anti Collagen 12



Anti (MAP) Collagen Type XII Polyclonal antibody [Cat# : LSL-LB1200]  
 FITC-Immunofluorescent staining of rat spinal cord frozen section (3% formalin)

Description	Cat No.	Size	Source	Host	Cross React	Application
Anti Collagen 12	LSL-LB1200	100 µl	-	Rabbit	HU/MS/RAT/CHK	ELISA/IHC(f, p)

### Anti Collagen 14

Description	Cat No.	Size	Source	Host	Cross React	Application
Anti Collagen 14	LSL-LB1400	100 µl	-	Rabbit	HU/MS/RAT/BOV	ELISA/IHC(f, p)