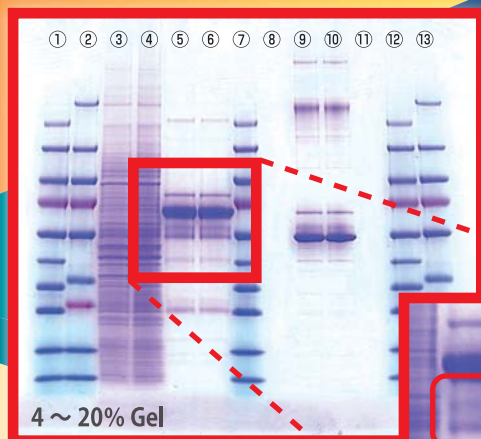


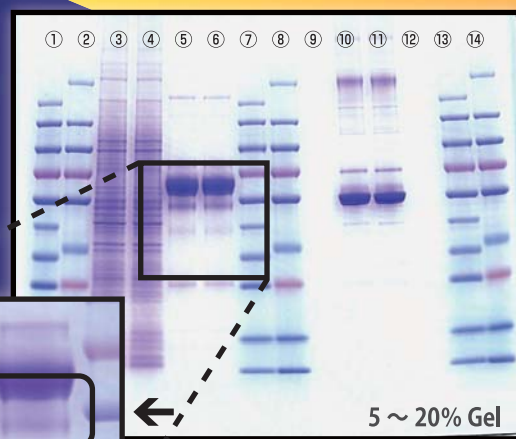
PRECAST GELS For Electrophoresis of Proteins and DNA

MULTIGEL® II Mini



MULTIGEL® II Mini

**Tighten
Your Bands!!**



leading competitor

- Laemmli chemistry for sharpest possible bands
- Excellent choice for QC labs
- For native (Davis method) or denatured (Laemmli method) proteins
- Custom prepared and delivered fresh and ready-to-use
- Minimum 2 months shelf life
- Gel % available: Fixed gradient, Wide Gradient, and unique Narrow Gradient

Specifications



PACKAGE: 5 gels
GEL SIZE (mm): 85 (W) × 90 (L) × 0.9 (T)
PLATE SIZE (mm): 100 (W) × 100 (L) × 3.1 (T)

STORAGE: 2-10°C
DO NOT FREEZE!

MULTIGEL® II Mini plates are compatible with these electrophoresis units:

- Cassette Electrophoresis Unit Model DPE-1020 (Cosmo Bio Co., Ltd. Cat. No. DCB-303111)
- Mini-Vertical Units SE260 (GE Healthcare, Product Code 80-6149-35)
- minVE Vertical Electrophoresis System (GE Healthcare, Product Code 80-6418-77)



COSMO BIO Co., LTD.

Fixed percentage Gels

Description	Catalog No.	Number of wells	Acrylamide concentration	MW (Da) Protein	MW (bp) DNA
MULTIGEL® II mini 5 (13W)	DCB-443138	13	5%	100 - 500K	-
MULTIGEL® II mini 5 (17W)	DCB-443145	17			
MULTIGEL® II mini 7.5 (13W)	DCB-414930	13	7.5%	45 - 250K	250 - 2,000
MULTIGEL® II mini 7.5 (17W)	DCB-414947	17			
MULTIGEL® II mini 10 (13W)	DCB-414954	13	10%	30 - 200K	140 - 1,700
MULTIGEL® II mini 10 (17W)	DCB-414961	17			
MULTIGEL® II mini 12.5 (13W)	DCB-414978	13	12.5%	20 - 150K	60 - 1,500
MULTIGEL® II mini 12.5 (17W)	DCB-414985	17			
MULTIGEL® II mini 15 (13W)	DCB-443152	13	15%	10 - 150K	-
MULTIGEL® II mini 15 (17W)	DCB-443169	17			

Standard Gradient Gels

Description	Catalog No.	Number of wells	Acrylamide concentration	MW (Da) Protein	MW (bp) DNA
MULTIGEL® II mini 2/15 (13W)	DCB-414855	13	2 - 15%	30 - 500K	200 - 2,000
MULTIGEL® II mini 2/15 (17W)	DCB-414862	17			
MULTIGEL® II mini 4/20 (13W)	DCB-414879	13	4 - 20%	15 - 250K	40 - 1,800
MULTIGEL® II mini 4/20 (17W)	DCB-414886	17			
MULTIGEL® II mini 5/10 (13W)	DCB-441776	13	5 - 10%	35 - 450K	-
MULTIGEL® II mini 5/10 (17W)	DCB-443114	17			
MULTIGEL® II mini 8/16 (13W)	DCB-417269	13	8 - 16%	20 - 200K	70 - 1,500
MULTIGEL® II mini 8/16 (17W)	DCB-417276	17			
MULTIGEL® II mini 10/20 (13W)	DCB-414893	13	10 - 20%	12 - 130K	30 - 1,500
MULTIGEL® II mini 10/20 (17W)	DCB-414909	17			
MULTIGEL® II mini 2D-10/20	DCB-415074	1	10 - 20%	12 - 130K	-
MULTIGEL® II mini 15/20 (13W)	DCB-432026	13	15 - 20%	3 - 85K	-
MULTIGEL® II mini 15/20 (17W)	DCB-443121	17			
MULTIGEL® II mini 15/25 (13W)	DCB-414916	13	15 - 25%	3 - 85K	20 - 1,000
MULTIGEL® II mini 15/25 (17W)	DCB-414923	17			

Unique Products!

Narrow Range Gradient Gels

Description	Catalog No.	Number of wells	Acrylamide concentration	MW (Da) Protein	MW (bp) DNA
MULTIGEL® II mini 6/9 (13W)	DCB-414992	13	6 - 9%	45 - 250K	250 - 2,000
MULTIGEL® II mini 6/9 (17W)	DCB-415005	17			
MULTIGEL® II mini 9/11 (13W)	DCB-415012	13	9 - 11%	30 - 200K	140 - 1,700
MULTIGEL® II mini 9/11 (17W)	DCB-415029	17			
MULTIGEL® II mini 11/14 (13W)	DCB-415036	13	11 - 14%	20 - 150K	60 - 1,500
MULTIGEL® II mini 11/14 (17W)	DCB-415043	17			
MULTIGEL® II mini 14/16 (13W)	DCB-415050	13	14 - 16%	15 - 100K	40 - 1,200
MULTIGEL® II mini 14/16 (17W)	DCB-415067	17			

Cassette Electrophoresis Unit

High quality construction. Designed for perfect fit with MULTIGEL® II precast gels. Runs one, or two gels together.

- Unique wedge system firmly mounts gel on electrophoresis unit.
- Buffer filled chambers to cool down all gel surfaces.
- Low volume of buffer required.
- Easy to load samples through transparent body.



Description	Catalog No.	Size
Cassette Electrophoresis Unit Model DPE-1020	DCB-303111	1 SET

2D-SILVER STAIN-II

2D-SILVER STAIN-II is applicable to the detection of proteins and nucleic acids subjected to polyacrylamide and SDS-polyacrylamide slab gel electrophoresis.

- Simple protocol
- Fast staining



Description	Catalog No.	Size
2D-Silver Stain Reagent II	DCB-423413	1 PACK



COSMO BIO Co., LTD.

TOYO EKIMAE BLDG. 2-20, TOYO 2-CHOME,
 KOTO-KU. TOKYO 135-0016, JAPAN
 TEL : (81)3-5632-9617
 FAX : (81)3-5632-9618
 e-mail : export@cosmobio.co.jp
 URL : www.cosmobio.com