

Immunity and Inflammation

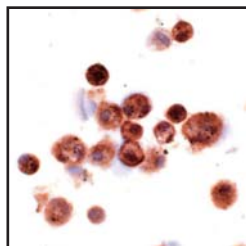
Antibodies

For research on macrophage, macrophage related diseases, inflammation, and immune function.

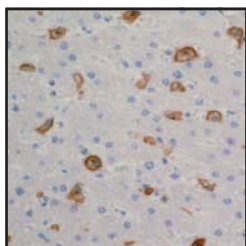
Anti Human Macrophage Scavenger Receptor A (MSR-A: CD204) Monoclonal Antibody (Clone No.: SRA-C6)

Class A macrophage scavenger receptor (MSR-A: CD204) was identified in the search for the receptor molecules that are implicated in the pathological deposition of cholesterol during atherogenesis through receptor-mediated uptake of modified low density lipoprotein (LDL). MSR-A possesses a wide range of ligand-binding specificities and recognize a variety of molecules such as modified LDL including acetylated LDL, oxidized LDL, advanced glycation end products (AGEs), polyribonucleotides such as poly G and poly I and bacterial surface lipids including lipopolysaccharide and lipoteichoic acid.

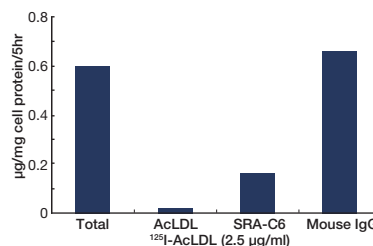
This antibody was produced from the mouse immunized with recombinant protein of human type I MSR-A, and has been proved to be useful for the western blotting and immunohistochemistry. This antibody also inhibits the endocytic degradation of acetylated LDL and oxidized LDL by high glucose-treated human monocyte-derived macrophages and has anti MSR-A neutralizing activity.



Human alveolar Human alveolar preparation): Most macrophages are positive.



Human liver (paraffin section): Kupffer cells are positive



Neutralizing activity of SRA-C6 (20 µg/ml): Inhibitory effect of anti-human SR-A antibody on the degradation of 125I-AcLDL by human monocyte-derived macrophages (day 7)

Takeya M, Department of Cell Pathology, Graduate School of Medical Sciences, Kumamoto University, Kumamoto, Japan

Catalog No.	Host	Isotype	Immunogen	Clone	Size	Application
KAL-KT118	Mouse	IgG1	Recombinant protein of human MSR-A (C terminal)	SRA-C6	50 µg / 200 µl	IHC, WB, Neu
KAL-KT118-S	Mouse	IgG1	Recombinant protein of human MSR-A (C terminal)	SRA-C6	50 µg / 200 µl	IHC, WB, Neu

KAL-KT118-S: "additive-free"

Macrophage related Antibodies

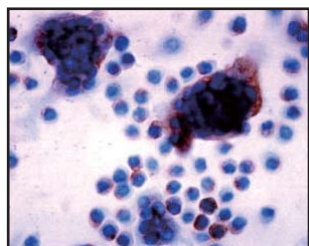
Catalog No.	Host	Isotype	Immunogen	Clone	Size	Application
Anti Human Macrophage Scavenger Receptor A (MSR-A: CD204) Monoclonal Antibody						
KAL-KT022	Mouse	IgG1	Recombinant protein of human type I SR-A	SRA-E5	50 µg / 200 µl	IHC
Anti Human Macrophage Surface Antigen Monoclonal Antibody						
KAL-KT117	Mouse	IgG2b, κ	Human peritoneal cells from patients with endometriosis incubated for 24 hours	PM-1K	50 µg / 200 µl	IHC
Anti Human Macrophage Surface Antigen Monoclonal Antibody						
KAL-KT013	Mouse	IgG1	Human alveolar macrophages	AM-3K	50 µg / 200 µl	IHC
Anti Rat Macrophage / Dendritic Cells Monoclonal Antibody						
KAL-KT014	Mouse	IgG1	Homogenate of silica-induced lung granuloma of rat	RM-4	50 µg / 200 µl	IHC
Anti Rabbit Macrophage / Monocyte Monoclonal Antibody						
KAL-KT015	Mouse	IgG1	Thioglycate-elicited rabbit peritoneal macrophages	RbM2	50 µg / 200 µl	IHC
Anti CapG (macrophage-capping protein) Polyclonal Antibody						
KAL-KR089	Rabbit	-	GST-human CapG fusion protein (Full length)	-	25 µg / 100 µl	WB



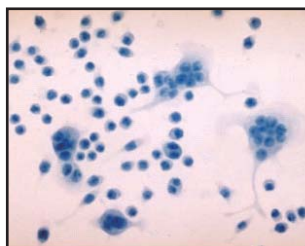
COSMO BIO Co., LTD.

Immunity and Inflammation Antibodies

Anti Mouse DC-STAMP Polyclonal Antibody



Anti DC-STAMP antibody



Control rabbit IgG

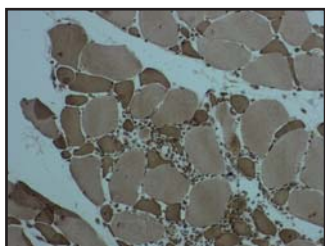
DC-STAMP (FIND) : Dendritic Cell-Specific Transmembrane Protein (IL-Four Induced)

Immunohistochemistry

Sample: RAW-D cells stimulated with RANKL+TNF- α

Catalog No.	Host	Isotype	Immunogen	Clone	Size	Application
KAL-KR104	Rabbit	-	Partial peptide of mouse DC-STAMP (C terminal)	-	25 μ g / 100 μ l	IC

Anti Human Chemokine-like factor 1 Polyclonal Antibody



Chemokine is a member of cytokines (interleukin, interferon etc.) and is known to activate chemokinesis of leukocytes. Chemokine-like factor 1 (CKLF1) is a novel chemokine and expressed on various types of tissue. It may play a role of chemokinetic induction on neutrophils, monocytes and lymphocytes. And CKLF1 is thought to be involved in reproduction of skeletal muscle cell.

The antibody was established from the purified serum immunized with partial peptide of human CKLF1. It is useful for immunohistochemical detection of CKLF 1.

Sample : Biopsied muscle of a patient with multiple myositis

Catalog No.	Host	Isotype	Immunogen	Clone	Size	Application
KAL-KR072	Rabbit	-	Partial peptide of human Chemokine-like factor1 (C terminal)	-	25 μ g / 100 μ l	IHC

Other Immunity and Inflammation Antibodies

Catalog No.	Host	Isotype	Immunogen	Clone	Size	Application
Anti S19 Ribosomal Protein Polyclonal Antibody						
KAL-KY008	Rabbit	-	S19 Ribosomal Protein	-	100 μ g	WB
Anti Mouse BNAS2 Polyclonal Antibody (BNAS2 : BASH N terminus associated protein 2)						
KAL-KR093	Rabbit	-	Partial peptide of mouse BNAS2 (N terminal)	-	25 μ g / 100 μ l	IC, IP, WB
Anti Mouse CIBZ Polyclonal Antibody						
KAL-KR103	Rabbit	-	Partial peptide of mouse CIBZ (C terminal)	-	100 μ g / 400 μ l	WB
Anti Human CD9 (MRP-1) Monoclonal Antibody (MRP-1: Motility-Related Protein 1)						
KAL-KS124	Mouse	IgG2a, κ	Human cancer cell line	6D11	50 μ g / 200 μ l	FCM, IH, IP, WB
Anti Human CD36 Monoclonal Antibody						
KAL-KS017	Mouse	IgG1	Human platelet membrane fraction	NF189	50 μ g / 200 μ l	FCM
Anti Human CD59 (HRF20) Monoclonal Antibody						
KAL-KS127	Mouse	IgG1, κ	Human cancer cell line	YUK11	50 μ g / 200 μ l	FCM, IP
Anti Human CD71 (TFRC) Monoclonal Antibody						
KAL-KS128	Mouse	IgG1, κ	Human cancer cell line	YUK9	50 μ g / 200 μ l	FCM, IP
Anti Human CD147(EMMPRIN) Monoclonal Antibody						
KAL-KS130	Mouse	IgG1, κ	Human cancer cell line	2G2	50 μ g / 200 μ l	FCM, IP
Anti CD3 Monoclonal Antibody						
KAL-KN141	Mouse	IgG2a	Human peripheral blood T cell	NU-T3	50 μ g / 200 μ l	FCM, IHC
Anti Mouse Fc α / μR Monoclonal Antibody						
KAL-KO571	Fc α / μ R deficient mouse	IgG1, κ	Mouse Fc α / μ R expressing cell line	TX57	50 μ g / 200 μ l	IP, FCM, IF, Neu
KAL-KO572				TX61	50 μ g / 200 μ l	IP, FCM, IF

www.cosmobio.com

For research use only, Not for diagnostic use.



COSMO BIO Co., LTD.

TOYO EKIMAE BLDG, 2-20, TOYO 2-CHOME,
KOTO-KU, TOKYO 135-0016, JAPAN
TEL : (81)3-5632-9617
FAX : (81)3-5632-9618
e-mail : export@cosmobio.co.jp
URL : www.cosmobio.com