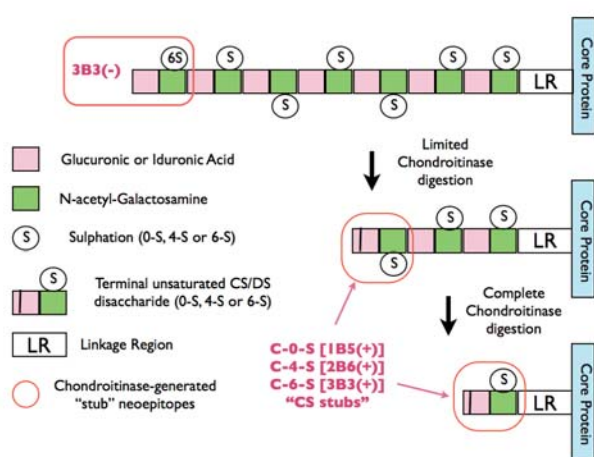


Antibodies for Proteoglycan Detection

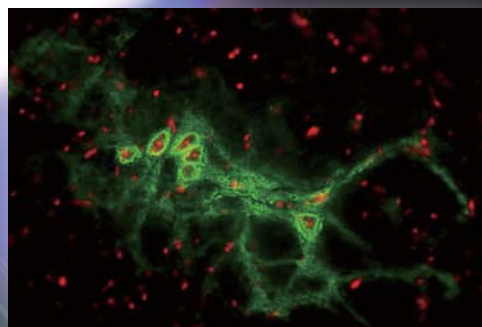
Anti Keratan Sulfate & Anti Chondroitin Sulfate (Stub) Antibodies

4 antibodies which are useful for proteoglycan detection are newly added to our antibody collection! Anti Keratan Sulfate antibody (clone 5D4) is raised against core protein of which human aggrecan is digested with chondroitinase ABC treatment. This antibody can detect Keratan sulfate which are localized in cornea and in cartilage.

Chondroitin sulfate-detecting antibodies (Anti CS, clone 2B6, 1B5, 3B3) are raised against core proteins of which rat cartilage aggrecans are digested with chondroitinase ABC treatment. These antibodies specifically recognize the surface formed by partial digestion with chondroitinase (Stub). These antibodies are cited in numerous articles, and seem to have important roles in regenerative medicine and cancer research.



Epitope mapping scheme of chondroitin sulfate-detecting antibodies (Anti CS, clone 1B5, 2B6, 3B3).



The Perineuronal Net in Rat Cerebellum 1B5 (+)

Description	Clone	Cross Reactivity	Purification	Application	Cat. No.	Quantity
Anti Keratan Sulfate	5D4	All species	Supernatant	WB/IHC/ELISA	CAC-PRPG-BC-M01	1 mL
Anti CS	2B6	All species	Supernatant	WB/IHC/ELISA	CAC-PRPG-BC-M02	1 mL
	1B5	All species	Supernatant	WB/IHC	CAC-PRPG-BC-M03	1 mL
	3B3	All species	Supernatant	IHC/ELISA	CAC-PRPG-BC-M04	1 mL

Related Products

Description	Clone	Cross Reactivity	Purification	Application	Cat. No.	Quantity
Anti Chondroitin Sulfate A	2H6	Rat, Animal	Ion-Exchange Chromatography	WB/ ELISA/ IP/ IHC(f)/ IHC(p)	CAC-NU-07-001	200 µL
Anti Decorin	889C7	Bovine	Supernatant	WB/ELISA/IHC(p)	CAC-PRPG-DC-M01	2 mL
Anti Biglycan	905A7	Human	Supernatant	ELISA/IHC(p)/IP	CAC-PRPG-BG-M01	2 mL
Anti Keratan Sulfate	373E1	Avian	Supernatant	IHC(p)/WB/ELISA/ IP/ FC	CAC-PRPG-KS-M01	2 mL
Anti Fibromodulin	636B12	Human	Supernatant	IHC/WB	CAC-PRPG-FBM-M01	2 mL
Anti SDP-35	2200D12	Human	Supernatant	IHC/WB	CAC-PRPG-SDP-M01	2 mL
Anti XTP1	2191H11	Human	Supernatant	IHC/WB	CAC-PRPG-XTP-M01	2 mL
Anti Versican/CSPG2	5C12	Human, Bovine	Supernatant	WB/IHC(f)/ELISA	CAC-PRPG-VS-M01	2 mL
	4C5	Human, Bovine	Supernatant	WB/IHC(f)/ELISA	CAC-PRPG-VS-M02	2 mL
Anti BPAG1 (BP230)	279	Human, Rat, Bovine, Rabbit, Porcine	Supernatant	WB/IF	CAC-NU-01-BP1	500 µL
Anti Laminin ALPHA3	BM515	Human, Bovine, Rabbit	Supernatant	WB/IF/IP	CAC-NU-01-LA3	500 µL
Anti Laminin ALPHA4	652C4	Human	Supernatant	IHC(f)/ IP	CAC-PRPG-LA4-M01	2 mL
Anti Collagen 7	BML39	Human, Bovine, Rabbit, Porcine	Supernatant	WB/IF/IP	CAC-NU-01-CO7	500 µL
Anti Collagen 12	378D5	Human	Supernatant	WB/ELISA/IHC(p)/IP	CAC-PRPG-CO12-M01	2 mL
	484D1	Human	Supernatant	WB/ELISA/IHC(p)	CAC-PRPG-CP-M01	2 mL
	490D11	Human	Supernatant	WB/IHC/ELISA	CAC-PRPG-CP-M02	2 mL
Anti Aggrecan	6F4	Human	Supernatant	WB/ELISA/IHC(p)	CAC-PRPG-AG-M01	2 mL
	5D3	Human, Bovine	Supernatant	IHC(p)/WB/ ELISA/IP	CAC-PRPG-AG-M02	2 mL
	5G2	Human	Supernatant	WB/IHC/ELISA/IP	CAC-PRPG-AG-M03	2 mL
	7B7	Human	Supernatant	WB/IHC/ELISA/IP	CAC-PRPG-AG-M04	2 mL
Anti NG2/CSPG4	2164H5	Human	Supernatant	WB/IHC/ELISA/FC	CAC-PRPG-NG-M01	2 mL
Anti Neurocan	1G2	Rat	Ig-PG	WB/ ELISA/ IP/ IHC(f)/ IHC(p)	CAC-NU-07-002	200 µL
Anti Neuroglycan C	C1	Rat	Ig-PG	WB/ IP/ IHC(f)/ IHC(p)	CAC-NU-07-003	200 µL
Anti N-syndecan	-	Mouse, Rat	Serum	WB/IHC(p)	CAC-NU-07-004	100 µL
Anti Neurocan peptides	-	Mouse, Rat	Serum	WB/IHC(p)	CAC-NU-07-005	200 µL



Transcription Regulator RBP-J κ

Anti RBP-J κ Monoclonal Antibody

RBP-J κ is a DNA binding protein supposed to be involved in reconstitution of immunoglobulin gene V, D, J regions which occurs at the beginning of B cell or T cell differentiation, and is expected to have important roles in B cell or T cell differentiation. However, most of its functions are still unclear. Anti-mouse RBP-J κ monoclonal antibodies (Rat) are useful tool for the functional analyses of RBP-J κ .



Specifications

Cat No.		SIM-2ZRBP1	SIM-2ZRBP2	SIM-2ZRBP3
Clone No.		K0043	T6709	T6719
Immunogen		recombinant (Baculovirus)	recombinant (<i>E.coli</i>)	recombinant (<i>E.coli</i>)
Ig class		rat IgG ₁	rat IgG _{2a}	rat IgG _{2a}
Application	Western Blot	+/-	+	+
	Immunostaining	+	+	-
	Super shift assay	+	-	-
	Immunoprecipitation	+	-	-
	ChIP	+	-	-
ELISA		+	+	+
Form		Purified	Culture supernatant	Culture supernatant
Package		0.5 mL	2 mL	2 mL
Storage		2 ~ 8°C (Below -20°C for long term storage)		

Reference

- 1) Hamaguchi Y, et al: J Biochem 112: 314-320, 1992.
- 2) Sakai T, et al: J Biochem 118: 621-628, 1995.
- 3) Tanigaki K, et al: Nature Immunology 3: 443-450, 2002.
- 4) Yamamoto et al: Current Biology 13: 333-338, 2003.
- 5) Grego-Bessa J, et al: Developmental Cell 12: 415-429, 2007.

Description	Clone	Host	Cross Reactivity	Application	Cat. No.	Quantity
Anti RBP-J κ	K0043	Rat	Mouse	WB / ELISA / IHC / IP / ChIP	SIM-2ZRBP1	0.5 mL
	T6709	Rat	Mouse	WB / ELISA / IHC	SIM-2ZRBP2	2 mL
	T6719	Rat	Mouse	WB / ELISA	SIM-2ZRBP3	2 mL

For research use only. Not for diagnostic use.



COSMO BIO Co., LTD.

TOYO EKIMAE BLDG. 2-20, TOYO 2-CHOME,
KOTO-KU, TOKYO 135-0016, JAPAN
TEL : (81)3-5632-9617
FAX : (81)3-5632-9618
e-mail : export@cosmobio.co.jp
URL : www.cosmobio.com